

War memorial architects and sculptors



War Memorials Trust

Across the UK there are estimated to be 100,000 war memorials. Most communities will have at least one and larger towns may have more. The earliest recorded memorial by Imperial War Museum's War Memorial Register dates from the 7th century however around two thirds of all the war memorials in the UK were unveiled in the aftermath of World War I. Commissions for the design of these war memorials to commemorate those who had fought and died in World War I went to established architects and sculptors. It also provided an opportunity for younger practitioners to come to the fore, laying the foundations for successful post-war careers.

This helpsheet is designed to be used by primary teachers as a starting point to identify architects and sculptors who were commissioned to design World War I memorials. There are further helpsheets which provide more detailed information about the lives and work of key architects [Sir Herbert Baker](#), [Sir Reginald Blomfield](#), [Sir Robert Lorimer](#), [Sir Edwin Lutyens](#) and the sculptor [Albert Toft](#) but this page lists them and many more in alphabetical order. Another artist known for their war memorials is Eric Gill. However, we have not included his work in this material as his life is controversial and, as such, could cause a distraction from what this work is seeking to achieve.

This helpsheet can be used as part of WMT's [Art unit of work: Great Artists and war memorials](#).

Sir Herbert Baker ([specific helpsheet with more detailed information](#))

- English architect (1862-1946) who is remembered for his work in South Africa, his work as one of the Principal Architects at the Commonwealth War Graves Commission from 1917 and the war memorials he designed in towns and villages in England
- Kemerton World War I and II memorial in Worcestershire (pictured) was designed by Baker and unveiled on 9th January 1921. It takes the form of a Latin cross and was built by Messrs ET Taylor assisted by Mr A Stanley, a mason from Kermerton

www.warmemorialsonline.org.uk/memorial/165773



© Jackie Shields, 2014

Sir Reginald Blomfield ([specific helpsheet with more detailed information](#))

- British architect, garden designer and author (1856-1942) who is remembered for his work as one of the Principal Architects for the Commonwealth War Graves Commission (CWGC) from 1917 to 1928. He designed cemeteries where the bodies of the fallen from World War I, who were not repatriated, were buried and also came up with the Cross of Sacrifice design which is used by the CWGC as a memorial in many of their cemeteries
- Blomfield was also commissioned to design a number of war memorials in the UK including the one which stands outside St Mary the Virgin's church (pictured) in his home town of Rye which was unveiled on 19th October 1919 www.warmemorialsonline.org.uk/memorial/106976



© David Ware, 2012

War Memorials Trust 14 Buckingham Palace Road London SW1W 0QP

Telephone: 020 7834 0200 / 0300 123 0764

Email: info@warmemorials.org **Website:** www.learnaboutwarmemorials.org

Registered Charity Commission Number: 1062255

© War Memorials Trust, 2019

Lionel Budden

- English architect (1887-1956) who spent much of his working life teaching Architecture to university students. He became Roscoe Professor in Architecture in the Liverpool University School of Architecture in 1933 and held this position until he retired in 1952
- Budden was commissioned to design Liverpool Cenotaph (pictured) which is located on The Plateau to the east of St George's Hall. It was unveiled on 11th November 1930 in the presence of approximately 80,000 people. Herbert Tyson Smith was the sculptor responsible for the bronze reliefs of marching soldiers and mourners
www.warmemorialsonline.org.uk/memorial/121229



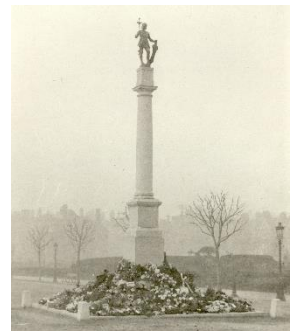
© War Memorials Trust, 2013

William Reid Dick

- Scottish sculptor (1879-1961) who was known for his innovative stylisation of form when creating sculptures for monuments. Reid Dick served with the Royal Engineers in France and Palestine during World War I
- Reid Dick was commissioned to design Bushey war memorial near Watford, Hertfordshire. It stands at the junction between School Lane and Sparrows Herne. The chosen design includes a female in mourning with her head bowed. She holds a laurel wreath in her right hand
www.warmemorialsonline.org.uk/memorial/109271

Sir George Frampton

- Notable British sculptor (1860-1928) who was influential during the New Sculpture movement. Frampton is perhaps best known for the Peter Pan sculpture in Kensington Gardens
- Frampton was responsible for sculpting the St George figure atop Hove war memorial (pictured) which was designed by Sir Edwin Lutyens and unveiled on 27th February 1921. The St George figure stands at 1.2m high and is made of bronze
www.warmemorialsonline.org.uk/memorial/107037. Frampton also designed the Edith Cavell memorial in St Martin's Place, London
www.warmemorialsonline.org.uk/memorial/112067



© Farthing Collection

C S Jagger

- British sculptor (1885-1934) who, following active service at Gallipoli and on the Western Front during World War I, created many sculpted works on the theme of war which tended towards the style of realism
- Jagger was commissioned to produce a design for the Royal Artillery war memorial on Hyde Park Corner in 1921. Jagger was requested to create something which specifically depicted the role of the artillery in the First World. The final design includes a stone carved Howitzer on top of a large pedestal which has carved stone reliefs on the sides of the artillery in action. The pedestal is surrounded by 4 bronze figures of artillery men. The memorial was unveiled on 18th October 1925
www.warmemorialsonline.org.uk/memorial/122319

War Memorials Trust 14 Buckingham Palace Road London SW1W 0QP

Telephone: 020 7834 0200 / 0300 123 0764

Email: info@warmemorials.org **Website:** www.learnaboutwarmemorials.org

Registered Charity Commission Number: 1062255

© War Memorials Trust, 2019

Gilbert Ledward

- English sculptor (1888-1960). Prior to the outbreak of World War I, Ledward trained at the Royal College of Art under Eduoard Lanteri. He then served in the Royal Garrison Artillery and as a war artist. He returned to the Royal College of Art in 1927 as professor of sculpture
- Ledward was in high demand as a sculptor of war memorials to commemorate World War I. He designed the Guards Division memorial in St James Park, London (pictured) which was unveiled on 16th October 1926 www.warmemorialsonline.org.uk/memorial/130022. He was also commissioned by the Commonwealth War Graves Commission to create two lions for the Memorial to the Missing at Ploegsteert, Belgium



© War Memorials Trust, 2015

Sir Robert Lorimer ([specific helpsheet with more detailed information](http://www.warmemorialsonline.org.uk/memorial/95311))

- Scottish architect (1864-1929). Renowned as a leading country house architect during the first two decades of the 20th century, Lorimer was appointed by the Commonwealth War Graves Commission in 1918 to design a number of cemeteries and memorials. He also designed a number of war memorials for villages, towns and cities in the UK
- One such memorial is Paisley war memorial, Strathclyde (pictured) which remembers the "1,953 men of Paisley who gave their lives on land and sea in the Great War"

www.warmemorialsonline.org.uk/memorial/95311



© War Memorials Trust, 2013

Sir Edwin Lutyens ([specific helpsheet with more detailed information](http://www.warmemorialsonline.org.uk/memorial/120533))

- Leading British architect (1869-1944) of the 20th century who was appointed as one of the first Principal Architects for the Commonwealth War Graves Commission designing many memorials and cemeteries in France. Also designed war memorials in the UK, most notably the Cenotaph in Whitehall
- Southampton Cenotaph was designed by Lutyens and unveiled on 6th November 1920. It is located in Watts (West) Park and cost £8,500 to make. A total of £9,485 17s 3d was raised which, after deductions, left a balance of £101 18s 11d which was donated to the Hampshire County and Isle of Wight memorial fund

www.warmemorialsonline.org.uk/memorial/120533

Walter Marsden

- English sculptor (1883 – 1969) from Lancashire who saw active service in World War I for which he was awarded the Military Cross. After the war Marsden carried out sculptural work on a number of war memorials, many of which were located in his home county
- One of the memorials designed by Marsden is Heywood war memorial, Greater Manchester. A bronze figure of Peace stands in front of a stone cenotaph with head bowed. Peace is flanked by two sarcophagus and this is where the 669 names of World War I fallen are inscribed. The memorial was unveiled on 22nd August 1925

www.warmemorialsonline.org.uk/memorial/136365

War Memorials Trust 14 Buckingham Palace Road London SW1W 0QP

Telephone: 020 7834 0200 / 0300 123 0764

Email: info@warmemorials.org **Website:** www.learnaboutwarmemorials.org

Registered Charity Commission Number: 1062255

© War Memorials Trust, 2019

Herbert Tyson Smith

- English sculptor born in Liverpool who served with the Royal Flying Corps during the World War I. In 1919, when he returned from the war, Smith set up his first studio. He was involved in designing a number of war memorials to remember the fallen of World War I
- Smith designed the Liverpool Scottish memorial, a tablet which is located in St George's Hall, Liverpool. It remembers "over 1,100 of all ranks of the Liverpool Scottish who fell in the Great War". www.warmemorialsonline.org.uk/memorial/120587. Smith also designed Accrington war memorial in Oak Hill Park (pictured). This takes the form of an obelisk with the figure of Grief. The memorial cost £6,885 and was unveiled on 1st July 1922 www.warmemorialsonline.org.uk/memorial/134487



© Michael P Coyle, 2011

Albert Toft ([specific helpsheet with more detailed information](#))

- British sculptor (1862-1949) who was part of the New Sculpture movement during the late 19th century. His career was dominated by public commemorative commissions in bronze which included war memorials for the Second Boer War and World War I
- The World War I memorial in Streatham, London (pictured) was designed by Toft. A bronze figure of a serviceman, arms reversed, stands on a stone plinth which has two bronze wreathes fixed to the front with the dates of the two World Wars www.warmemorialsonline.org.uk/memorial/120355



© War Memorials Trust, 2013